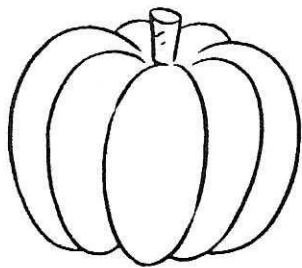


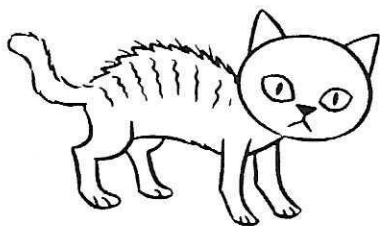
biān fú
蝙蝠



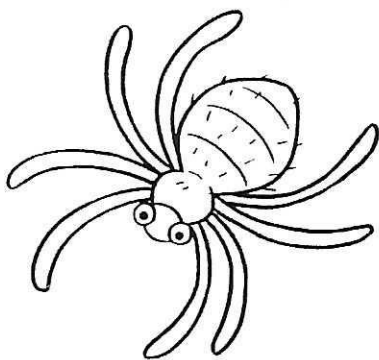
nán guā
南瓜



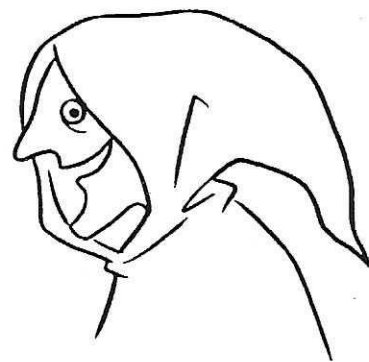
guài wù
怪物



hēi māo
黑貓



zhī zhū
蜘蛛



wū pó
巫婆



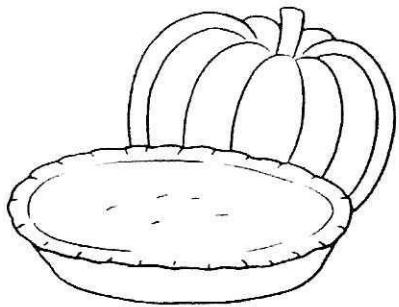
gǔ tóu
骨頭



nán guā dēng
南瓜燈



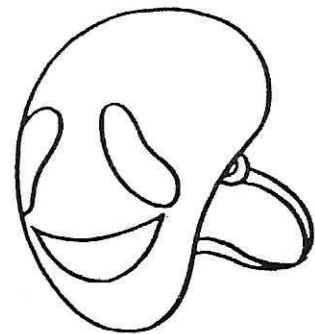
guǐ
鬼



nán guā gāo
南₃瓜₄糕₁



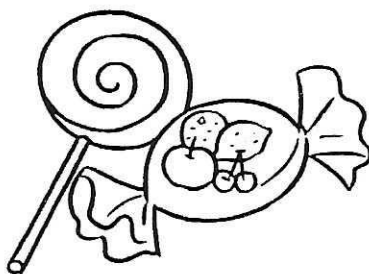
guǐ wū
鬼₁屋₁



miàn jù
面₁具₄



māo tóu yīng
貓₁頭₄鷹₂



táng guǒ
糖₄果₁



huà zhuāng wǔ huì
化₄裝₄舞₁會₁



xī xuè guǐ
吸₁血₁鬼₁



gěi táng huò dǎo dàn
給₁糖₁或₁搗₁蛋₁



fú zhuāng
服₁裝₄